

# HOMES & GARDENS

**HOW TO  
SLEEP BETTER**  
COLOURS, LAYOUTS,  
FURNITURE,  
BEDDING AND TECH  
- ALL YOU NEED  
TO KNOW

## Create a sanctuary

INTERIORS TO INSPIRE - COSY, CONSIDERED AND CHIC

**ALL IS CALM**  
DECORATING  
WITH GREEN  
10 STEPS TO A  
HYGGE HOUSE  
WHERE TO SHOP  
FOR WELLNESS

**SMART  
STORAGE**  
THE MOST STYLISH  
WAYS TO BRING  
ORDER TO YOUR  
LIVING ROOM

JANUARY 2023

**LIVING AREA**  
The bespoke curved fire place is finished with Venetian plaster for another layer of textural interest in the room.  
Huggy armchair.  
Sarah Ellison



**L**isa Buxton's interior schemes draw on influences gleaned from American and European design, as well as from her native Australia. Her unique, pared-back style makes her the perfect sometime collaborator of architect and friend Lucy Bowen. The pair have produced five projects together to date. 'Our styles are very complementary. And I guess it helps that we've known each other since we were ten,' says Lisa.

Their latest project is this Spanish Mission-style house, built in the 1920s, refitted in the 1960s and, by 2020, in dire need of an overhaul. The owners had lived there for a couple of years before discovering Lucy's work. Lisa joined the project soon after, doing most of her consultations via Zoom due to the pandemic. 'I would drop samples on the doorstep and run. It was challenging, but we made it work.'

Keeping the frontage of the house unchanged was non-negotiable and, besides, its prettiness made this unnecessary. Instead, the focus of the build was on the rear. 'The house is in a heritage precinct of Melbourne that has stringent building guidelines,' says Lucy. 'But essentially, we knocked the back half off, introduced a semi-basement and landscaped around the swimming pool to better connect it to the house.' Their clients, a family with three young boys, wanted something practical in function and layout, but also something with an edge to it in terms of the design. To this end, the four-bedroom house now boasts a new living/kitchen space, a laundry room and a subterranean games room complete with pool table. 'It's a bit of a man-cave down there,' smiles Lisa.

Throughout, Lucy has introduced many subtle curves and arches to the build, which reflect her

signature style. 'I simply love curves and I always have. I use them as a tool to soften the different spaces as well as the building's overall impact,' she says. Lisa has complemented these architectural details by bringing in soft lines of her own, in her choice of fabrics and furnishings.

Tables are round or oval, seating is soft and curvaceous, curtains fold and drape and there are few hard edges to be found anywhere. 'With young boys running around, this approach turned out to be practical as well as aesthetically pleasing,' says Lisa.

Key to the brief was the desire to reflect the house's location, midway between the beach and the city, by introducing a soothing cream and caramel scheme that's sophisticated rather than typically 'beachy'. Lucy's focus on textural finishes as a crucial design element provided a base palette that's clean, easy on the eye and tactile. 'I love creating calm and cosy environments when designing a home, so I usually stick to a very neutral palette,' she says. 'I introduced timber throughout for the floors and beams, and plenty of travertine stone and white rendered finishes. And, of course, lighter colours were a priority as the house was relatively dark before.' The result is quietly sensuous, with the inclination to reach out and touch all the gorgeous surfaces.

Above all, the house meets the expectation of its owners, who gave free-rein to Lisa and Lucy to express their visions for it. 'In regards to the number of rooms and their functions, our clients were specific, but beyond that they were very trusting of our vision and our design approach,' says Lucy. A dream project then, and one that's been exquisitely executed. 📸

■ [lisabuxton.com](http://lisabuxton.com)

"I BELIEVE LESS IS MORE AND THAT DESIGN SHOULD  
POSSESS A POINT OF VIEW WITHOUT BEING FUSSY"

**LISA BUXTON**, interior designer

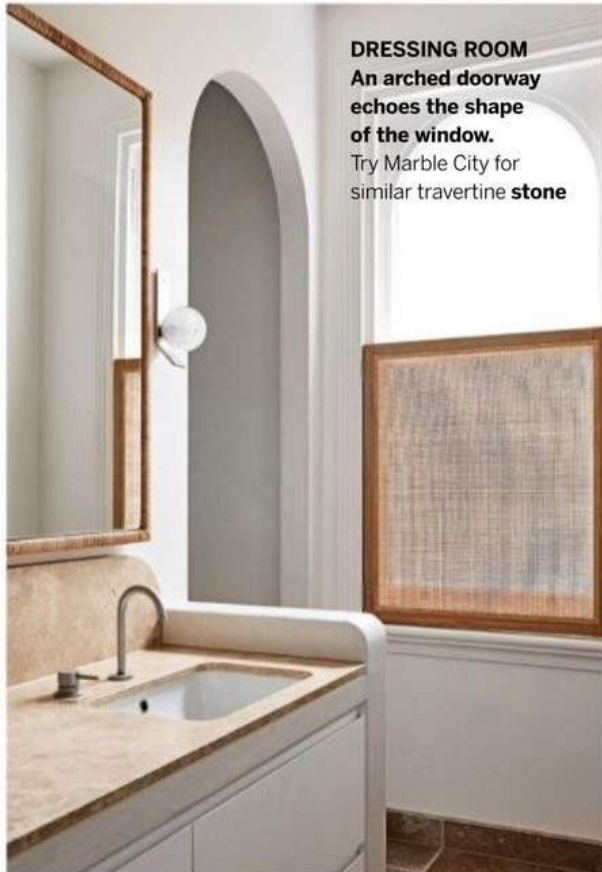




**POWDER ROOM**  
A reeded wall treatment complements the curved travertine mirror and basin surround.  
Up Down metal **sconce**.  
In Common With, **Towels**.  
Hale Mercantile Co



**LIVING AREA**  
Floating Venetian plaster ledges are populated by pieces from Lisa's ceramic collection.  
**Ceramics**, Lisa Buxton Interiors



**DRESSING ROOM**  
An arched doorway echoes the shape of the window.  
Try Marble City for similar travertine **stone**

## MEET THE DESIGNER

Lisa Buxton shares her style inspiration

**BIGGEST SUCCESS** The synergy between the architecture and the furnishings, which come together to create a peaceful and soft aesthetic.

**GO-TO COLOURS** I've just been in Italy and bright green was everywhere, which I loved. But generally monochromatic with splashes of colour is my go-to. Creams and whites with autumnal shades like rust orange, burgundies and eggplant.

**DESIGN HEROES** Antony Todd, who I worked for in New York. French designer Pierre Yovanovitch is a big inspiration. Closer to home I love the work of Fiona Lynch, an Australian designer who has a beautiful style.

**LAST ITEM YOU BOUGHT FOR YOUR HOME** Colourful Murano wine glasses from a recent trip to Venice. I managed to get them back to Australia in one piece.

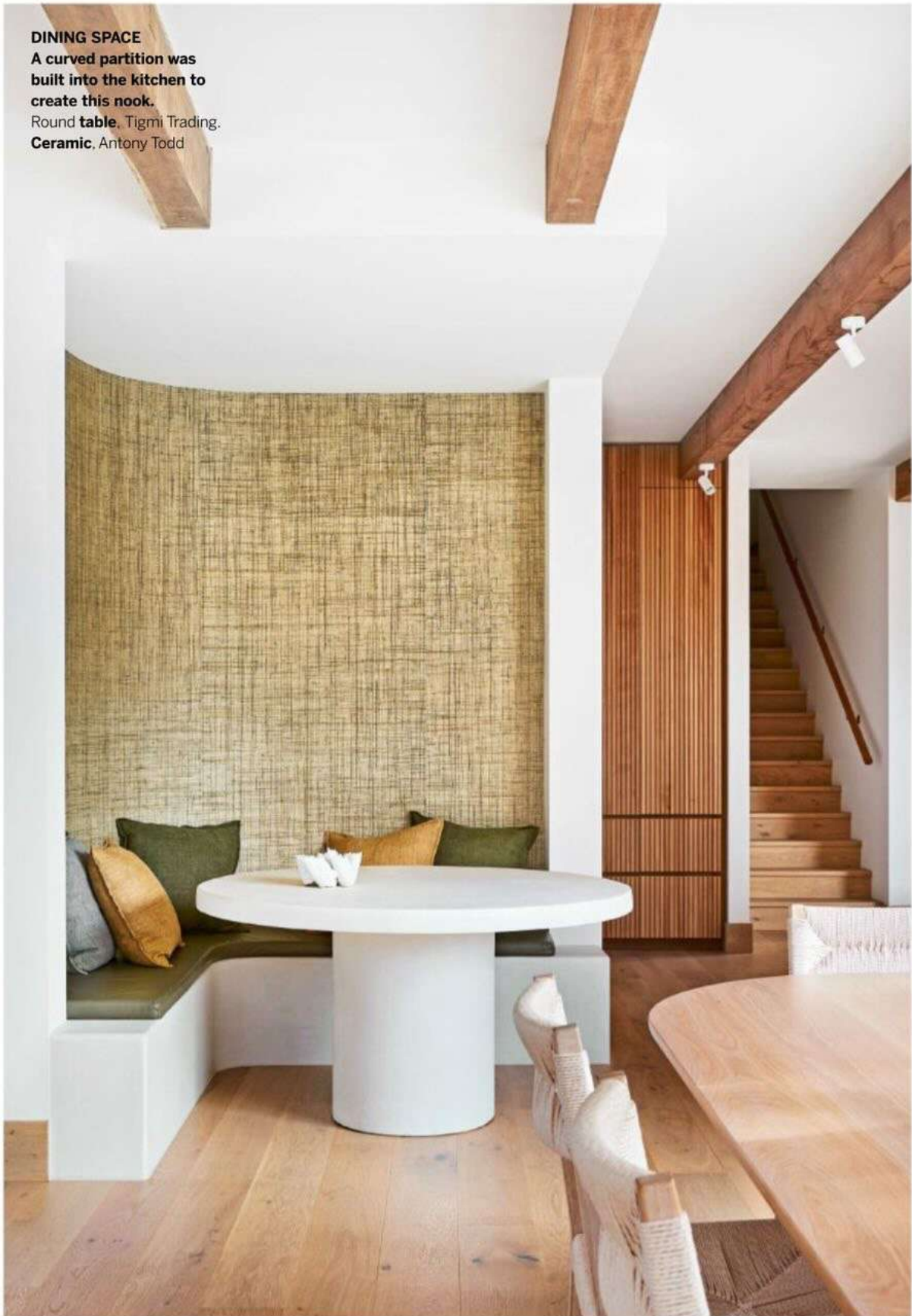
**WHAT'S ON YOUR COFFEE TABLE** Loads of design books and a much loved ceramic bought in New York 15 years ago.



**DINING SPACE**

**A curved partition was built into the kitchen to create this nook.**

Round table, Tigmi Trading.  
Ceramic, Antony Todd





**DRESSING ROOM**  
The seating/storage unit is finished in leather and sliding timber doors close off the double shower area.  
Parasol rattan wicker lamp. Arteriors





**LIVING AREA**  
Bespoke rattan screens filter the daylight through sliding doors that draw back to reveal the gardens and swimming pool beyond. Pendant light, Anna Charlesworth. Huggy chair, Sarah Ellison



**KITCHEN**

The striking pared-back look is maintained by having big appliances like the fridge in a separate pantry area off to the side.

Dita stools, Grazia & Co.

Dining chairs, MCM

House, Myron table,

In Good Company

